



MDSETHOS 3

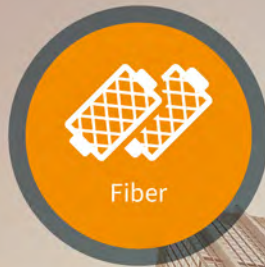
PERFORMANCE TEXTILE INNOVATION



MDSGROUP

HOW

Vertical Integration



Explore Infinite Horizons

Building up plenty of advanced & modern techniques.

WHY

ACCESS

We have been conceiving an overall trend with key topics in order to meet market expectation.

WHAT



WHO

Adhere to "Circular Economy" accomplishment with on-line & off-line alternation.

On-site

Door to Door

Online

eFab www.mds-efab.com

Alibaba.com mds-group.en.alibaba.com

HORIZONS www.mds-horizons.com

WHERE

Europe / America / Asia

A B O U T A C C E S S

A new thinking of multiple-
characteristics stylish life style
and an Access to the world.

Learn from the Earth, Respect
for nature and Cherish
everything.

S M A R T E R

Healthy / Advantage
Well-being

S P R I T E R

Less is more / Mobility
Lite-life

A D A P T E R

Mimicry / Defending climate
Dynamic balancing / Natural charm

C O L O R I S T

Luminous / Flourish
Chromatic / Garish / Swank

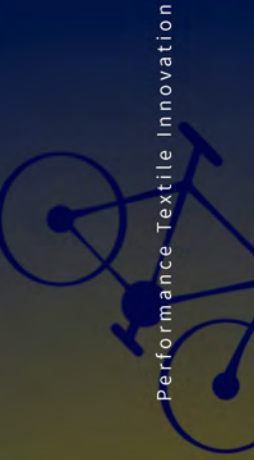
C H A M E L E O N

Protection / High hue
Reflective / Fascinate

E C O - K N I G H T

Seed to Seed / Save for future /
Chemical free

ACCESS



ADAPTER

“Do not pray for an easy life,
pray for the strength to endure a difficult one.”

– Bruce Lee, Martial Artist

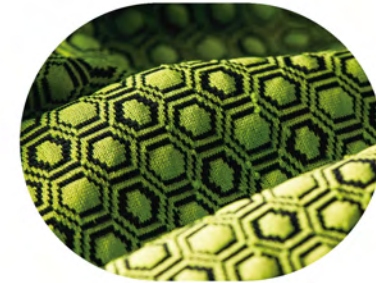


BLENDING

Combining synthetic fiber
with natural fiber to help
make adjusting to the climate.

TACTILE

Soft and granular to
bring a hint of nature.

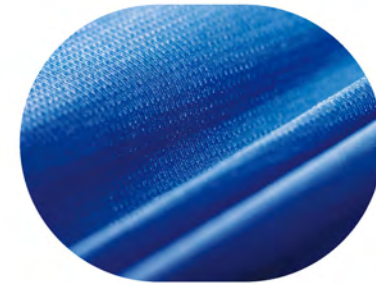


PUFFY

Build an air room from texture to
create a lightweight feel and
insulation.

ZONED

Strategically placed (mapped
out) areas of flexible and
technical fabrics to reach the
ultimate comfort.



BREEZY

Create continuously
cool feeling to our body.



ACCESS

COLORIST

"My life didn't please me, so I create my life."

- Coco Chanel, Fashion designer

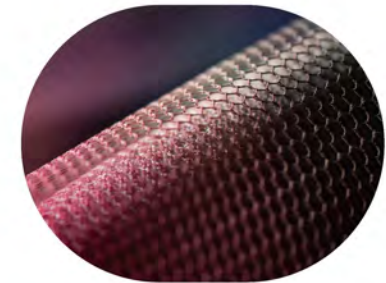


OMBRE

Overlapping shapes and shadows with gradient color harmonies.

HOLOGRAM

Dimensional hollowed layered surfaces bring florid vision.

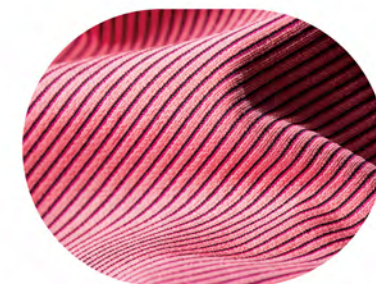
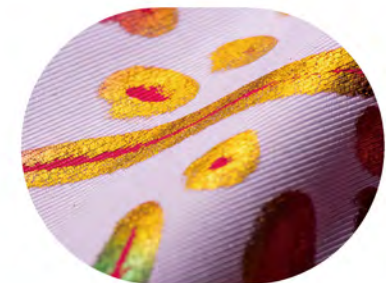


COMFORT DYE

Two to three colors interwoven with multivariate diversification.

PRINT-TECH

Additional modern glittering prevail colorful glamour shine.



ILLUSIONAL

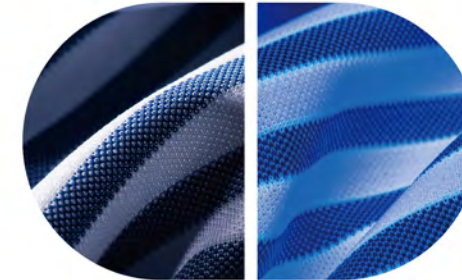
Electrical voltage lines construct magical moiré wanderings.



CHAMELEON

Every human being is intended to have a character of his own; to be what no others are, and to do what no other can do."

- William Channing, Theologian

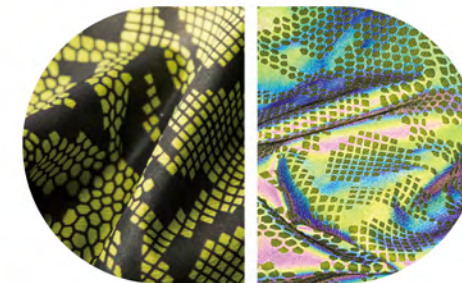


GLOW

The short lived glow relieves fear of darkness but creates more fun.

INVISIBLE

Mysterious shine revealed by our living environment.

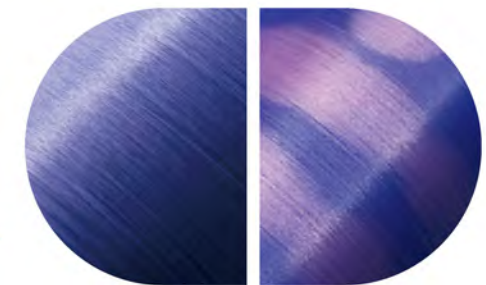


REFLECTIVE

New ways of applying specific reflectivity.

REACTIVE

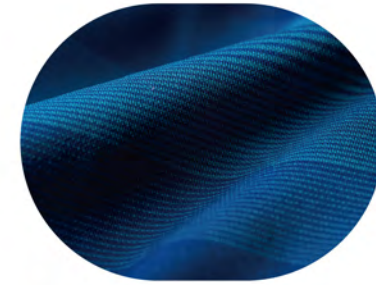
High sensory changed by human characteristics.



ECO-KNIGHT

“You must take personal responsibility. You cannot change the circumstances, the seasons, or the wind, but you can change yourself. That is something you have charge of.”

– Jim Rohn, Author

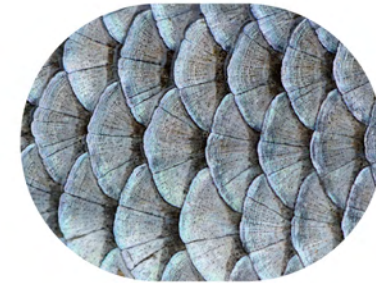
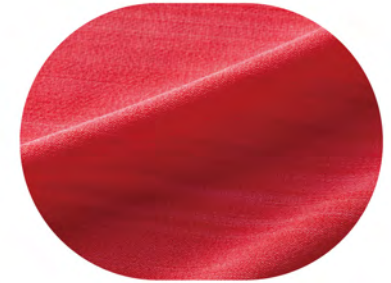


FRIENDLY DYE

Color fusion of OMBRE series.

FRIENDLY DYE

Reduce limited resources by dyeing with low temperatures.



SKIN FRIENDLY

Collagen extracted from fish scales to bring out moist and supple components.

RECYCLE (PET)

Save natural resources and reduce petrochemical raw materials.



WATERLESS COLOR SYSTEM

By 2030 nearly half the global population could be facing water scarcity, giving us the drive to develop waterless materials.



SPRITER

"Act the way you'd like to be and soon
you'll be the way you act."

-Leonard Cohen, Singer



Flurry 2L

Lightweight couture
upgrade delicate aspect.

Flash 2.5L

Multiplicity aesthetic
and functions in one.

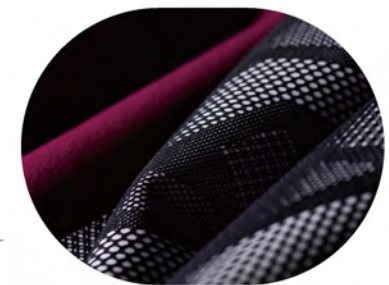


Ventilated Punch

Novelty breathable
transparent porous.

Imponderable 3L

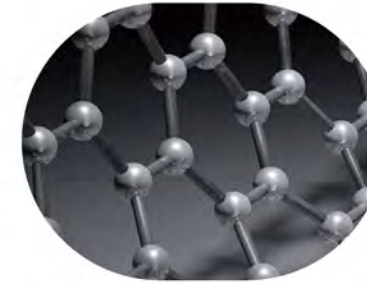
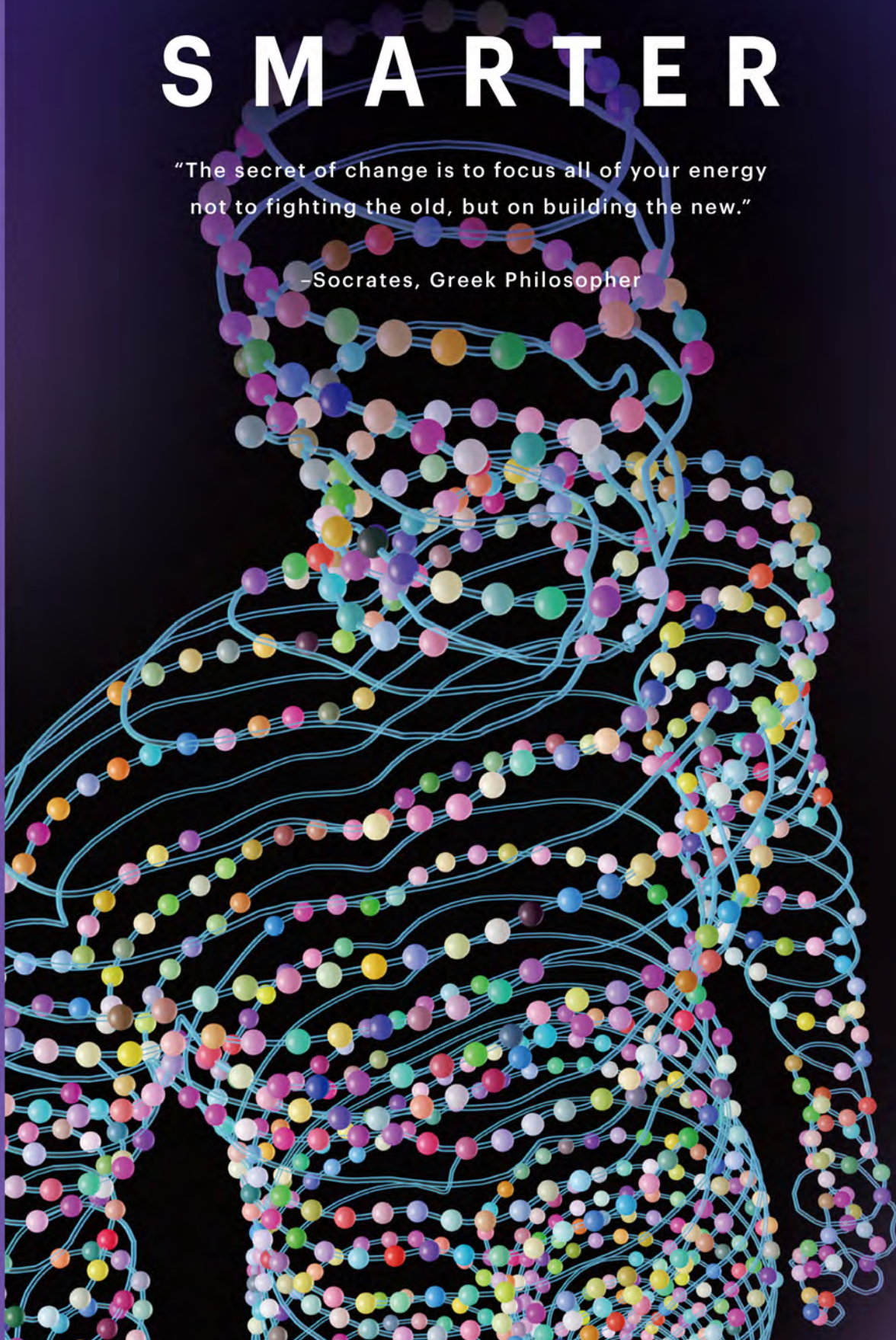
High resistance strictly
attraction base on
modern leisure.



SMARTER

"The secret of change is to focus all of your energy not to fighting the old, but on building the new."

-Socrates, Greek Philosopher



BIO-MASS GRAPHENE

Organic construction improve utilitarian functionality.

COPPER IONS

Seek new chemical element from body to compose ecological cycle.



UNREVEALED

Men-Chuen persist constantly in new innovation ideas...
Coming Soon!



CORPORATE SOCIAL RESPONSIBILITY

MANUFACTURING GREEN PRODUCTS



MDS ETHOS 3

PERFORMANCE TEXTILE INNOVATION



Wind resistant



Thermal regulation



Cooling



Anti-bacterial



Light weight



4-Way stretch



Anti-UV



Water-repellent



Customized design



Eco-friendly



Moisture management



2-Way stretch



Anti-odor



Soil-release



Waterproof



Breathable



Air permeability



MEN-CHUEN FIBRE INDUSTRY CO., LTD.

10F., No.392, Sec. 1, Neihu Rd., Taipei City 114, Taiwan (R.O.C.)

TEL +886 2-2799-0858 FAX +886 2-2799-0959

EMAIL service@mds-intl.com

www.mds-intl.com



Facebook



www.mds-intl.com